



**TRANSPORTATION CABINET**

Frankfort, Kentucky 40622  
www.transportation.ky.gov/

**Steven L. Beshear**  
Governor

**Michael W. Hancock, P.E.**  
Secretary

February 21, 2012

CALL NO. 100  
CONTRACT ID NO. 121002  
ADDENDUM # 3

Subject: Campbell County, IM NH 4714 (034)  
Letting February 24, 2012

- (1) Revised - Plan Sheets - R2ad & R100
- (2) Revised - Bid Items - Pages 308-321 of 321

Proposal revisions are available at <http://transportation.ky.gov/Construction-Procurement/>.

Plan revisions are available at <http://www.lynnimaging.com/kytransportation/>.

If you have any questions, please contact us at 502-564-3500.

Sincerely,

A handwritten signature in blue ink that reads "Ryan Griffith".

Ryan Griffith  
Director  
Division of Construction Procurement

RG:ks  
Enclosures



An Equal Opportunity Employer M/F/D

## GENERAL SUMMARY

COUNTY OF	ITEM NO.	SHEET NO.
CAMPBELL	6-2021.00	R2ad

ITEM	DESCRIPTION	UNIT	I-471	I-275 WB	I-275 RAMP A	US 27 RAMP A	US 27 RAMP B	US 27 RAMP C	US 27 RAMP D	GRAND AVENUE RAMP E	GRAND AVENUE RAMP EE	GRAND AVENUE RAMP F	GRAND AVENUE RAMP H	GRAND AVENUE RAMP K	MEMORIAL PARKWAY RAMP A	MEMORIAL PARKWAY RAMP D	MEMORIAL PARKWAY RAMP M	MEMORIAL PARKWAY RAMP N	KY 8 RAMP A	KY 8 RAMP B	KY 8 RAMP K	KY 8 RAMP L	MAINT. OF TRAFFIC	PROJECT TOTAL
71	CRUSHED AGGREGATE SIZE NO. 57 ⑨	TON	1541																					1541
1015	INSPECT & CERTIFY EDGE DRAIN SYSTEM	LP SUM																						1
1810	STANDARD CURB AND GUTTER	LIN FT																						58 ⑪
1982	DELINEATOR FOR GUARDRAIL-WHITE	EACH	488	26			4	8	20	12		9	17	12	8	4		16		4	4			632
1983	DELINEATOR FOR GUARDRAIL-YELLOW	EACH					2			17					3	5	14							41
1984	DELINEATOR FOR BARRIER-WHITE ⑦	EACH	209	3						5										2		24	3205	3448
1985	DELINEATOR FOR BARRIER-YELLOW ⑦	EACH	980							5										4		24	3205	4218
2003	RELOCATE TEMPORARY CONCRETE MEDIAN BARRIER	LIN FT																					93240	93240
2014	BARRICADE-TYPE III	EACH																					25	25 ⑧
2237	DITCHING	LIN FT																						20000
2265	REMOVE FENCE	LIN FT																			166			166
2274	FENCE-6 FT CHAIN LINK	LIN FT																			166			166
2483	CHANNEL LINING CLASS II	TON																						1041 ②
2484	CHANNEL LINING CLASS III	TON			120																			120
2555	CONCRETE - CLASS B ①	CU YD		183																				183
2562	SIGNS	SQ FT																				4400		4400 ⑧
2568	MOBILIZATION	LP SUM																						1
2569	DEMOBILIZATION	LP SUM																						1
2650	MAINTAIN AND CONTROL TRAFFIC	LP SUM																					1	1 ⑧
2653	LANE CLOSURE	EACH																					26	26 ⑧
2671	PORTABLE CHANGEABLE MESSAGE SIGN	EACH																					25	25 ⑧
2720	SIDEWALK-4 IN CONCRETE	SQ YD																						40
2726	STAKING	LP SUM										9	20								11			1
2775	ARROW PANEL	EACH																					26	26 ⑧
2894	CRASH CUSHION TYPE VI-T	EACH																					29	29 ⑩
2898	RELOCATE CRASH CUSHION	EACH																					28	28 ⑩
3148	CONCRETE MEDIAN BARRIER TY 9E	LIN FT	811																		99			910
3171	CONCRETE BARRIER WALL TYPE 9T	LIN FT																					64100	64100
5950	EROSION CONTROL BLANKET ⑥	SQ YD	68283	5025	11613	1803	1582	1081	1386	3333	496	2506	728	2018	1299	986	891	689	878	733	111	111		127552 ③
5966	TOPDRESSING FERTILIZER	TON																						8
5985	SEEDING AND PROTECTION ⑤	SQ YD		11600																				11600
5989	SPECIAL SEEDING CROWN VETCH ④	SQ YD		4540	9800																			14340

**NOTES:**

SEE THE PROPOSAL FOR BID ITEMS AND QUANTITIES FOR THE FOLLOWING WORK:

BRIDGE REHABILITATION WORK  
TRAFFIC LOOP INSTALLATION

SEE SHEET S1 FOR I-275 WB BRIDGE WIDENING QUANTITIES AND BID ITEMS  
SEE SHEET T1 FOR PERMANENT SIGNING QUANTITIES AND BID ITEMS  
SEE SHEET T23 FOR LIGHTING QUANTITIES AND BID ITEMS  
SEE SHEET T47 FOR TRAFFIC SIGNAL QUANTITIES AND BID ITEMS

- ① FOR GRAVITY RETAINING WALLS - SEE SHEETS R100 AND R135
- ② 41 TONS CARRIED FORWARD FROM THE PIPE DRAINAGE SUMMARY 1000 TON INCLUDED FOR REPAIR OF DITCHES AND IS TO BE USED AS DIRECTED BY THE ENGINEER
- ③ 22000 SY FOR USE IN CONJUNCTION WITH THE DITCHING BID ITEM
- ④ TO BE PLACED ON CUT SLOPES 2:1 OR STEEPER
- ⑤ FOR THE 3:1 AND 2.75:1 FILL SLOPES ON I-275 WB
- ⑥ ESTIMATED FOR 10' WIDE DISTURBED AREA FOR SHOULDERS ON I-471 AND 5' WIDE FOR RAMP SHOULDERS ALSO FOR PLACING ON CUT SLOPES 2:1 OR STEEPER ON I-275 RAMP A AND I-275 WB
- ⑦ INSTALL ON EXISTING BARRIERS PRIOR TO BEGINNING PHASE I (QUANTITY BASED ON 50' SPACING)
- ⑧ INCLUDES QUANTITIES FOR MAINTENANCE OF TRAFFIC WORK IN OHIO
- ⑨ FOR BACKFILLING BEHIND CONCRETE MEDIAN BARRIER TYPE 9B2 OR TYPE 9E2 THROUGH I-471 SB WIDENING AREA (BASED ON ESTIMATE OF 901 CY AT 1.71 TONS PER CY)
- ⑩ 8 INCLUDED FOR CONSTRUCTION ACCESS OPENINGS IF USED
- ⑪ FOR REPLACING THE EXISTING CURB AND GUTTER ON THREE MILE ROAD AS SHOWN ON SHEET R100. INCLUDES REMOVING EXISTING CURB.

FILE NAME: P:\CIVIL\14716-2021.00\CONTRACT PLANS AND PROPOSAL REVISIONS AFTER SUBMITTAL\PLANS REVISION 4\ROO2ADSU.DGN  
 USER: fvonbehren  
 DATE PLOTTED: February 17, 2012  
 E-SHEET NAME:  
 MicroStation v8.11.7.443

# GENERAL SUMMARY

△ REVISED 2-20-12

COUNTY OF	ITEM NO.	SHEET NO.
CAMPBELL	6-2021.00	R20d

ITEM	DESCRIPTION	UNIT	I-471	I-275 WB	I-275 RAMP A	US 27 RAMP A	US 27 RAMP B	US 27 RAMP C	US 27 RAMP D	GRAND AVENUE RAMP E	GRAND AVENUE RAMP EE	GRAND AVENUE RAMP F	GRAND AVENUE RAMP H	GRAND AVENUE RAMP K	MEMORIAL PARKWAY RAMP A	MEMORIAL PARKWAY RAMP D	MEMORIAL PARKWAY RAMP M	MEMORIAL PARKWAY RAMP N	KY 8 RAMP A	KY 8 RAMP B	KY 8 RAMP K	KY 8 RAMP L	MAINT. OF TRAFFIC	PROJECT TOTAL
71	CRUSHED AGGREGATE SIZE NO. 57 ⑨	TON	1541																					1541
1015	INSPECT & CERTIFY EDGE DRAIN SYSTEM	LP SUM																						1
1810	STANDARD CURB AND GUTTER	LIN FT																						58 ⑪
1982	DELINEATOR FOR GUARDRAIL-WHITE	EACH	488	26			4	8	20	12		9	17	12	8	4		16			4	4		632
1983	DELINEATOR FOR GUARDRAIL-YELLOW	EACH					2			17					3	5	14							41
1984	DELINEATOR FOR BARRIER-WHITE ⑦	EACH	209	3						5										2		24	3205	3448
1985	DELINEATOR FOR BARRIER-YELLOW ⑦	EACH	980							5										4		24	3205	4218
2003	RELOCATE TEMPORARY CONCRETE MEDIAN BARRIER	LIN FT																					93240	93240
2014	BARRICADE-TYPE III	EACH																					25	25 ⑧
2237	DITCHING	LIN FT																						20000
2265	REMOVE FENCE	LIN FT																			166			166
2274	FENCE-6 FT CHAIN LINK	LIN FT																			166			166
2483	CHANNEL LINING CLASS II	TON																						1041 ②
2484	CHANNEL LINING CLASS III	TON			120																			120
2555	CONCRETE - CLASS B ①	CU YD		183																				183
2562	SIGNS	SQ FT																				4400		4400 ⑧
2568	MOBILIZATION	LP SUM																						1
2569	DEMOBILIZATION	LP SUM																						1
2650	MAINTAIN AND CONTROL TRAFFIC	LP SUM																					1	1 ⑧
2653	LANE CLOSURE	EACH																					26	26 ⑧
2671	PORTABLE CHANGEABLE MESSAGE SIGN	EACH																					25	25 ⑧
2720	SIDEWALK-4 IN CONCRETE	SQ YD									9	20									11			40
2726	STAKING	LP SUM																						1
2775	ARROW PANEL	EACH																					26	26 ⑧
2894	CRASH CUSHION TYPE VI-T	EACH																					29	29 ⑩
2898	RELOCATE CRASH CUSHION	EACH																					28	28 ⑩
3148	CONCRETE MEDIAN BARRIER TY 9E	LIN FT	811																		99			910
3171	CONCRETE BARRIER WALL TYPE 9T	LIN FT																					64100	64100
5950	EROSION CONTROL BLANKET ⑥	SQ YD	68283	5025	11613	1803	1582	1081	1386	3333	496	2506	728	2018	1299	986	891	689	878	733	111	111		127552 ③
5966	TOPDRESSING FERTILIZER	TON																						8
5985	SEEDING AND PROTECTION ⑤	SQ YD		11600																				11600
5989	SPECIAL SEEDING CROWN VETCH ④	SQ YD		4540	9800																			14340

**NOTES:**

SEE THE PROPOSAL FOR BID ITEMS AND QUANTITIES FOR THE FOLLOWING WORK:

BRIDGE REHABILITATION WORK  
TRAFFIC LOOP INSTALLATION

SEE SHEET S1 FOR I-275 WB BRIDGE WIDENING QUANTITIES AND BID ITEMS  
SEE SHEET T1 FOR PERMANENT SIGNING QUANTITIES AND BID ITEMS  
SEE SHEET T23 FOR LIGHTING QUANTITIES AND BID ITEMS  
SEE SHEET T47 FOR TRAFFIC SIGNAL QUANTITIES AND BID ITEMS

- ① FOR GRAVITY RETAINING WALLS - SEE SHEETS R100 AND R135
- ② 41 TONS CARRIED FORWARD FROM THE PIPE DRAINAGE SUMMARY 1000 TON INCLUDED FOR REPAIR OF DITCHES AND IS TO BE USED AS DIRECTED BY THE ENGINEER
- ③ 22000 SY FOR USE IN CONJUNCTION WITH THE DITCHING BID ITEM
- ④ TO BE PLACED ON CUT SLOPES 2:1 OR STEEPER
- ⑤ FOR THE 3:1 AND 2.75:1 FILL SLOPES ON I-275 WB
- ⑥ ESTIMATED FOR 10' WIDE DISTURBED AREA FOR SHOULDERS ON I-471 AND 5' WIDE FOR RAMP SHOULDERS ALSO FOR PLACING ON CUT SLOPES 2:1 OR STEEPER ON I-275 RAMP A AND I-275 WB
- ⑦ INSTALL ON EXISTING BARRIERS PRIOR TO BEGINNING PHASE I (QUANTITY BASED ON 50' SPACING)
- ⑧ INCLUDES QUANTITIES FOR MAINTENANCE OF TRAFFIC WORK IN OHIO
- ⑨ FOR BACKFILLING BEHIND CONCRETE MEDIAN BARRIER TYPE 9B2 OR TYPE 9E2 THROUGH I-471 SB WIDENING AREA (BASED ON ESTIMATE OF 901 CY AT 1.71 TONS PER CY)
- ⑩ 8 INCLUDED FOR CONSTRUCTION ACCESS OPENINGS IF USED
- ⑪ FOR REPLACING THE EXISTING CURB AND GUTTER ON THREE MILE ROAD AS SHOWN ON SHEET R100. INCLUDES REMOVING EXISTING CURB.

FILE NAME: P:\CIVIL\14716-2021.00\CONTRACT PLANS AND PROPOSAL REVISIONS AFTER SUBMITTAL PLANS REVISION 4\ROO2ADSDU.DGN  
 USER: fvonbehren  
 DATE PLOTTED: February 17, 2012  
 E-SHEET NAME:  
 MicroStation v8.11.7.443

DITCH CONSTRUCTION NOTES

Station	Loc.	Size-Shape	Lining Type	Quantity	D	T
1205+70 - 1206+75	Lt	Spl V	EC Blnk+	120 SY	1.0'	-
1208+50 - 1209+00	Lt	Spl V	EC Blnk+	60 SY	1.0'	-
1210+35 - 1212+50	Lt	2' FB Surf	Cl III*	225 Ton	1.0'	2.0'
1212+50 - 1213+00	Lt	Spl 2' FB	EC Blnk+	65 SY	1.0'	-
1213+00 - 1215+00	Lt	6' FB Rdwy	-	-	-	-

\*CLASS III - MOD

CONSTRUCT EMBANKMENT FOUNDATION BENCH

Lt Sta 1200+00 to Lt Sta 1209+15  
Lt Sta 1210+25 to Lt Sta 1212+25

REMOVE GUARDRAIL

Lt Sta 1200+00 to Lt Sta 1208+81 - 898 Lin Ft  
Lt Sta 1210+45.4 to Lt Sta 1213+71.6 - 327 Lin Ft

CONSTRUCT GUARDRAIL-STEEL W BEAM S-FACE

Lt Sta 1200+00 to Lt Sta 1208+81.2 - 912.5 Lin Ft  
w/ 1- Guardrail End Treatment Type 2A &  
1- Guardrail Connector to Bridge End Type A-1  
Lt Sta 1210+50 to Lt Sta 1214+50 - 362.5 Lin Ft  
w/ 1- Guardrail Connector to Bridge End Type A-1  
& 1- Guardrail End Treatment Type 4A

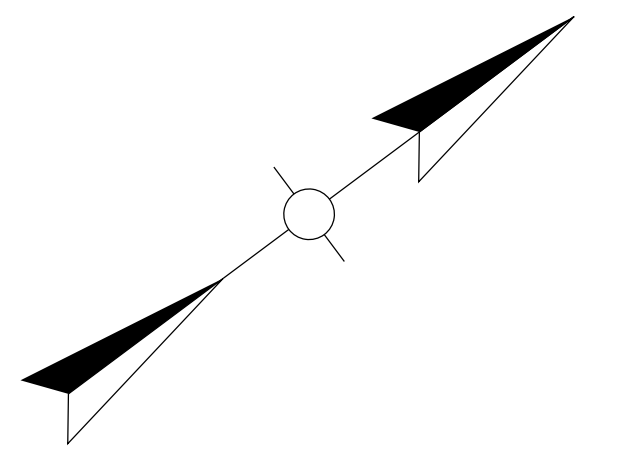
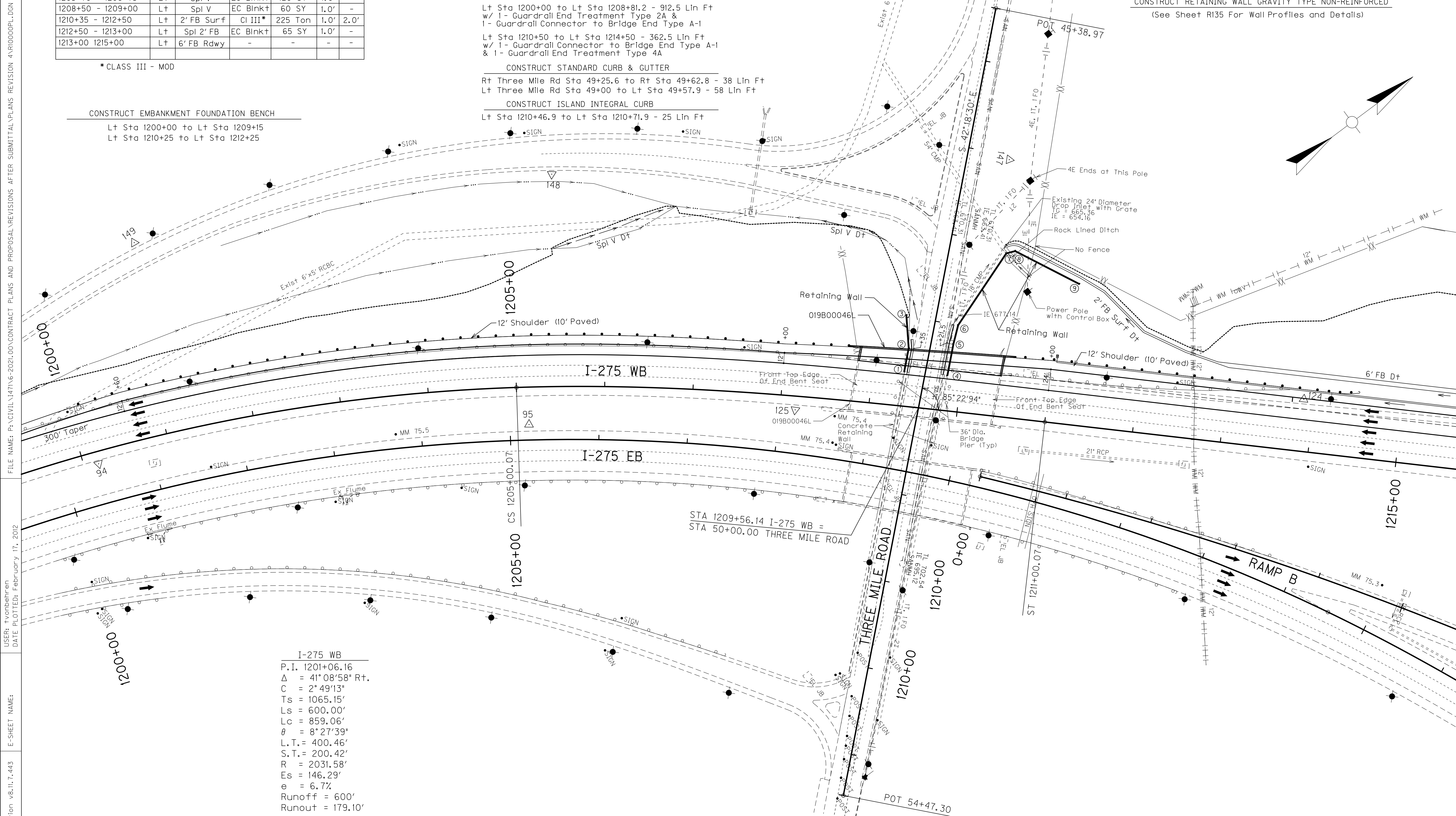
CONSTRUCT STANDARD CURB & GUTTER

Rt Three Mile Rd Sta 49+25.6 to Rt Sta 49+62.8 - 38 Lin Ft  
Lt Three Mile Rd Sta 49+00 to Lt Sta 49+57.9 - 58 Lin Ft

CONSTRUCT ISLAND INTEGRAL CURB

Lt Sta 1210+46.9 to Lt Sta 1210+71.9 - 25 Lin Ft

CONSTRUCT RETAINING WALL GRAVITY TYPE NON-REINFORCED  
(See Sheet R135 For Wall Profiles and Details)



FILE NAME: P:\CIVIL\14716\2021.00\CONTRACT PLANS AND PROPOSAL REVISIONS AFTER SUBMITTAL PLANS REVISION 4\10000PL.DGN  
 USER: fvonbehren  
 DATE PLOTTED: February 17, 2012  
 E-SHEET NAME:  
 MicroStation v8.11.7.443

I-275 WB  
 P.I. 1201+06.16  
 $\Delta = 41^{\circ}08'58''$  Rt.  
 $C = 2^{\circ}49'13''$   
 $T_s = 1065.15'$   
 $L_s = 600.00'$   
 $L_c = 859.06'$   
 $\theta = 8^{\circ}27'39''$   
 $L.T. = 400.46'$   
 $S.T. = 200.42'$   
 $R = 2031.58'$   
 $E_s = 146.29'$   
 $e = 6.7\%$   
 $Runoff = 600'$   
 $Runout = 179.10'$

△ REVISED 2-20-12

CONSTRUCT RETAINING WALL GRAVITY TYPE NON-REINFORCED  
(See Sheet R135 For Wall Profiles and Details)

DITCH CONSTRUCTION NOTES

Station	Loc.	Size-Shape	Lining Type	Quantity	D	T
1205+70 - 1206+75	Lt	Spl V	EC Blnk+	120 SY	1.0'	-
1208+50 - 1209+00	Lt	Spl V	EC Blnk+	60 SY	1.0'	-
1210+35 - 1212+50	Lt	2' FB Surf	Cl III*	225 Ton	1.0'	2.0'
1212+50 - 1213+00	Lt	Spl 2' FB	EC Blnk+	65 SY	1.0'	-
1213+00 - 1215+00	Lt	6' FB Rdwy	-	-	-	-

\*CLASS III - MOD

CONSTRUCT EMBANKMENT FOUNDATION BENCH

Lt Sta 1200+00 to Lt Sta 1209+15  
Lt Sta 1210+25 to Lt Sta 1212+25

REMOVE GUARDRAIL

Lt Sta 1200+00 to Lt Sta 1208+81 - 898 Lin Ft  
Lt Sta 1210+45.4 to Lt Sta 1213+71.6 - 327 Lin Ft

CONSTRUCT GUARDRAIL-STEEL W BEAM S-FACE

Lt Sta 1200+00 to Lt Sta 1208+81.2 - 912.5 Lin Ft  
w/ 1- Guardrail End Treatment Type 2A & 1- Guardrail Connector to Bridge End Type A-1

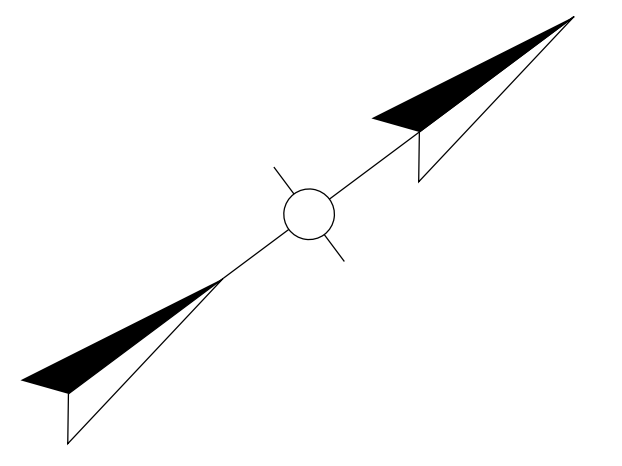
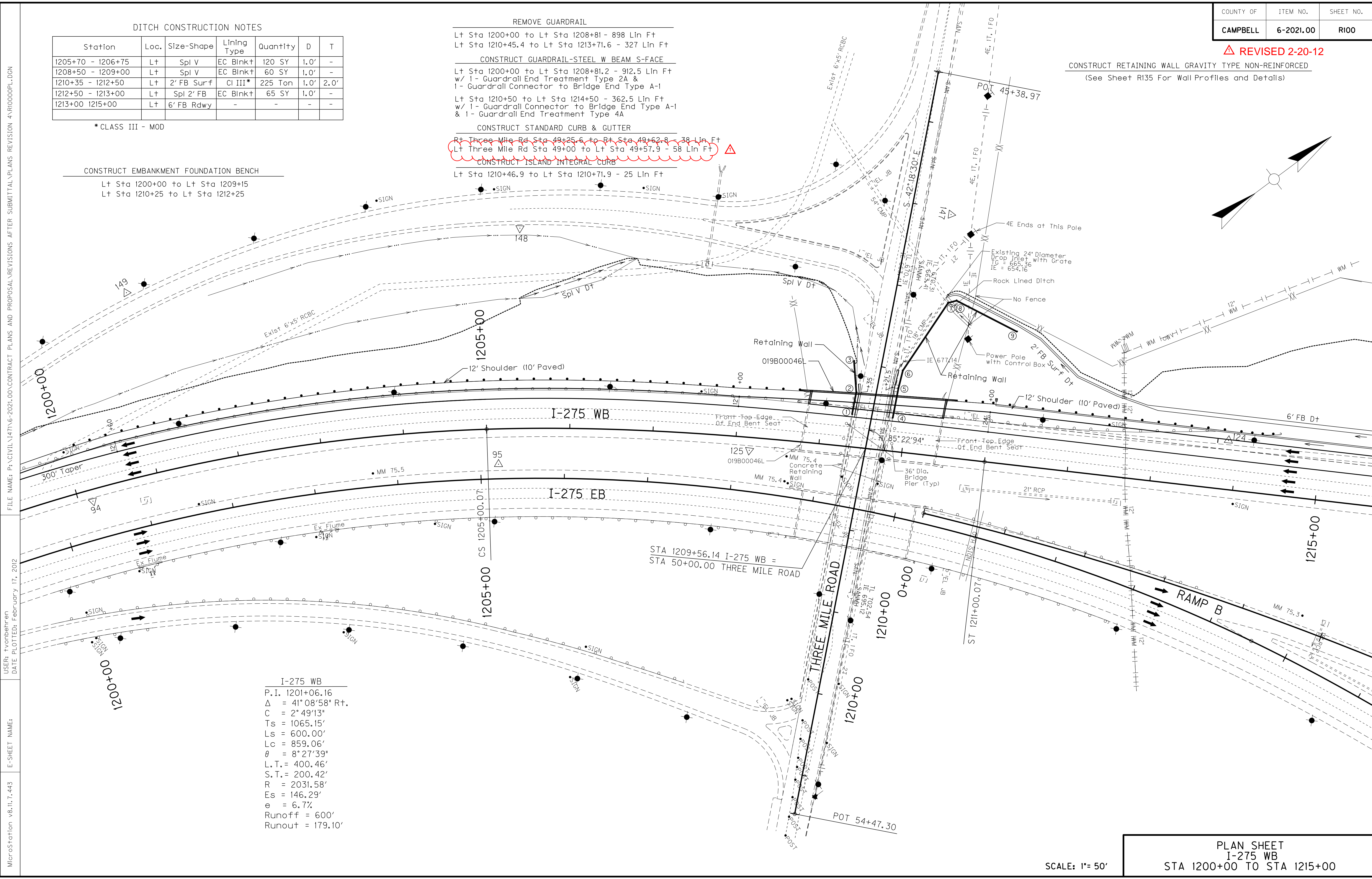
Lt Sta 1210+50 to Lt Sta 1214+50 - 362.5 Lin Ft  
w/ 1- Guardrail Connector to Bridge End Type A-1 & 1- Guardrail End Treatment Type 4A

CONSTRUCT STANDARD CURB & GUTTER

Rt Three Mile Rd Sta 49+25.6 to Rt Sta 49+62.8 - 38 Lin Ft  
Lt Three Mile Rd Sta 49+00 to Lt Sta 49+57.9 - 58 Lin Ft

CONSTRUCT ISLAND INTEGRAL CURB

Lt Sta 1210+46.9 to Lt Sta 1210+71.9 - 25 Lin Ft



FILE NAME: P:\CIVIL\14716-2021.00\CONTRACT PLANS AND PROPOSAL REVISIONS AFTER SUBMITTAL PLANS REVISION 4\10000PL.DGN  
 USER: fvonbehren  
 DATE PLOTTED: February 17, 2012  
 E-SHEET NAME:  
 MicroStation v8.11.7.443

I-275 WB  
 P.I. 1201+06.16  
 $\Delta = 41^{\circ}08'58''$  Rt.  
 $C = 2^{\circ}49'13''$   
 $T_s = 1065.15'$   
 $L_s = 600.00'$   
 $L_c = 859.06'$   
 $\theta = 8^{\circ}27'39''$   
 $L.T. = 400.46'$   
 $S.T. = 200.42'$   
 $R = 2031.58'$   
 $E_s = 146.29'$   
 $e = 6.7\%$   
 $Runoff = 600'$   
 $Runout = 179.10'$

CONTRACT ID: 121002  
COUNTY: CAMPBELL  
PROPOSAL: IM NH 4714(034)

LINE NO	ITEM	DESCRIPTION	APPROXIMATE QUANTITY	UNIT	UNIT PRICE	AMOUNT
SECTION 0001 PAVING NO ALTERNATE (REVISED: 2-13-12)						
0010	00001	DGA BASE	8,265.000	TON		
0020	00008	CEMENT STABILIZED ROADBED	30,990.000	SQYD		
0030	00018	DRAINAGE BLANKET-TYPE II-ASPH	4,890.000	TON		
0040	00022	JPC PAVEMENT DRAINAGE BLANKET	1,267.000	TON		
0050	00100	ASPHALT SEAL AGGREGATE	65.100	TON		
0060	00103	ASPHALT SEAL COAT	7.900	TON		
0070	00214	CL3 ASPH BASE 1.00D PG64-22	121.000	TON		
0080	00217	CL4 ASPH BASE 1.00D PG64-22	15,225.000	TON		
0090	00219	CL4 ASPH BASE 1.00D PG76-22	3,911.000	TON		
0100	00342	CL4 ASPH SURF 0.38A PG76-22	1,671.000	TON		
0110	00358	ASPHALT CURING SEAL	50.500	TON		
0120	02058	REMOVE PCC PAVEMENT	24,384.000	SQYD		
0130	02071	JPC PAVEMENT-11 IN	205.000	SQYD		
0140	02086	JPC PAVEMENT-13 IN	3,906.000	SQYD		
0150	02087	JPC PAVEMENT-13 IN SHLD	2,431.000	SQYD		
0160	02091	REMOVE PAVEMENT	2,065.000	SQYD		
0170	02115	SAW-CLEAN-RESEAL TVERSE JOINT	6,145.000	LF		
0180	02116	SAW-CLEAN-RESEAL LONGIT JOINT	5,924.000	LF		
0190	02200	ROADWAY EXCAVATION	60,453.000	CUYD		
0200	02235	BACKFILLING UNDERCUT	450.000	CUYD		

CONTRACT ID: 121002  
COUNTY: CAMPBELL  
PROPOSAL: IM NH 4714(034)

PAGE: 2  
LETTING: 02/24/12  
CALL NO: 100

LINE NO	ITEM	DESCRIPTION	APPROXIMATE QUANTITY	UNIT	UNIT PRICE	AMOUNT
0210	02542	CEMENT	724.000	TON		
0220	02598	FABRIC-GEOTEXTILE TYPE III	1,418.000	SQYD		
0230	02696	SHOULDER RUMBLE STRIPS-SAWED	4,328.000	LF		
0240	02702	SAND FOR BLOTTER	140.000	TON		
0250	03302	REPAIR CONCRETE CURB	93.000	LF		
0260	21173EC	SAW-CLEAN-RESEAL RANDOM CRACKS	133.000	LF		
ALT GROUPIAA10002		PAVING ASPHALT ALTERNATE				
0270	00001	DGA BASE	109,179.000	TON		
0280	00003	CRUSHED STONE BASE	999.000	TON		
0290	00008	CEMENT STABILIZED ROADBED	399,027.000	SQYD		
0300	00018	DRAINAGE BLANKET-TYPE II-ASPH	87,917.000	TON		
0310	00100	ASPHALT SEAL AGGREGATE	764.600	TON		
0320	00103	ASPHALT SEAL COAT	91.800	TON		
0330	00214	CL3 ASPH BASE 1.00D PG64-22	81,302.000	TON		
0340	00217	CL4 ASPH BASE 1.00D PG64-22	163,912.000	TON		
0350	00219	CL4 ASPH BASE 1.00D PG76-22	43,964.000	TON		
0360	00339	CL3 ASPH SURF 0.38D PG64-22	8,346.000	TON		
0370	00342	CL4 ASPH SURF 0.38A PG76-22	20,338.000	TON		
0380	00358	ASPHALT CURING SEAL	713.000	TON		
0390	01825	ISLAND CURB AND GUTTER	261.000	LF		
0400	01845	ISLAND INTEGRAL CURB	25.000	LF		
0410	01891	ISLAND HEADER CURB TYPE 2 (REVISED: 2-13-12)	9,031.000	LF		

CONTRACT ID: 121002  
COUNTY: CAMPBELL  
PROPOSAL: IM NH 4714(034)

PAGE: 3  
LETTING: 02/24/12  
CALL NO: 100

LINE NO	ITEM	DESCRIPTION	APPROXIMATE QUANTITY	UNIT	UNIT PRICE	AMOUNT
0420	02058	REMOVE PCC PAVEMENT	375,000.000	SQYD		
0430	02091	REMOVE PAVEMENT	5,244.000	SQYD		
0440	02200	ROADWAY EXCAVATION	96,143.000	CUYD		
0450	02235	BACKFILLING UNDERCUT	2,085.000	CUYD		
0460	02542	CEMENT	11,710.000	TON		
0470	02598	FABRIC-GEOTEXTILE TYPE III	6,568.000	SQYD		
0480	02599	FABRIC-GEOTEXTILE TYPE IV	4,349.000	SQYD		
0490	02696	SHOULDER RUMBLE STRIPS-SAWED	72,851.000	LF		
0500	02702	SAND FOR BLOTTER	1,980.000	TON		
0510	10203ND	PAVEMENT ADJUSTMENT ASPHALT	( 1.00)	LS	2,084,493.00	2,084,493.00
0520	20997ED	REMOVE TRAFFIC ISLAND	65.000	SQYD		
0530	24459EC	CONCRETE MEDIAN BARRIER TYPE 9E2 (REVISED: 2-13-12)	1,493.000	LF		
ALT GROUPIAA20003		PAVING CONCRETE ALTERNATE				
0540	00001	DGA BASE	16,141.000	TON		
0550	00003	CRUSHED STONE BASE	71,158.000	TON		
0560	00008	CEMENT STABILIZED ROADBED	381,895.000	SQYD		
0570	00022	JPC PAVEMENT DRAINAGE BLANKET	16,481.000	TON		
0580	00100	ASPHALT SEAL AGGREGATE	764.600	TON		
0590	00103	ASPHALT SEAL COAT	91.800	TON		
0600	00214	CL3 ASPH BASE 1.00D PG64-22	2,225.000	TON		
0610	00339	CL3 ASPH SURF 0.38D PG64-22	325.000	TON		
0620	00358	ASPHALT CURING SEAL	381.900	TON		



CONTRACT ID: 121002  
COUNTY: CAMPBELL  
PROPOSAL: IM NH 4714(034)

PAGE: 4  
LETTING: 02/24/12  
CALL NO: 100

LINE NO	ITEM	DESCRIPTION	APPROXIMATE QUANTITY	UNIT	UNIT PRICE	AMOUNT
0630	01825	ISLAND CURB AND GUTTER	47.000	LF		
0640	01845	ISLAND INTEGRAL CURB (REVISED: 2-13-12)	9,021.000	LF		
0650	01891	ISLAND HEADER CURB TYPE 2	249.000	LF		
0660	02058	REMOVE PCC PAVEMENT	375,000.000	SQYD		
0670	02071	JPC PAVEMENT-11 IN	40,990.000	SQYD		
0680	02072	JPC PAVEMENT-11 IN SHLD	19,977.000	SQYD		
0690	02086	JPC PAVEMENT-13 IN	223,629.000	SQYD		
0700	02087	JPC PAVEMENT-13 IN SHLD	96,863.000	SQYD		
0710	02091	REMOVE PAVEMENT	5,244.000	SQYD		
0720	02200	ROADWAY EXCAVATION	23,306.000	CUYD		
0730	02235	BACKFILLING UNDERCUT	2,004.000	CUYD		
0740	02542	CEMENT	11,208.000	TON		
0750	02598	FABRIC-GEOTEXTILE TYPE III	6,312.000	SQYD		
0760	02599	FABRIC-GEOTEXTILE TYPE IV	3,778.000	SQYD		
0770	02695	RUMBLE STRIPS TYPE 3	8,710.000	LF		
0780	02702	SAND FOR BLOTTER	955.000	TON		
0790	10203ND	PAVEMENT ADJUSTMENT CONC	( 1.00)	LS	1,437,067.00	1,437,067.00
0800	20997ED	REMOVE TRAFFIC ISLAND	65.000	SQYD		
0810	23335EC	CONCRETE MEDIAN BARRIER TY 9B2	1,493.000	LF		
SECTION 0004 ROADWAY						
0820	00071	CRUSHED AGGREGATE SIZE NO 57	1,541.000	TON		

CONTRACT ID: 121002  
COUNTY: CAMPBELL  
PROPOSAL: IM NH 4714(034)

PAGE: 5  
LETTING: 02/24/12  
CALL NO: 100

LINE NO	ITEM	DESCRIPTION	APPROXIMATE QUANTITY	UNIT	UNIT PRICE	AMOUNT
0830	00078	CRUSHED AGGREGATE SIZE NO 2	72.000	TON		
0840	00461	CULVERT PIPE-15 IN	129.000	LF		
0850	00462	CULVERT PIPE-18 IN	70.000	LF		
0860	00464	CULVERT PIPE-24 IN	30.000	LF		
0870	01001	PERFORATED PIPE-6 IN	95,384.000	LF		
0880	01002	PERFORATED PIPE-8 IN	7,594.000	LF		
0890	01011	NON-PERFORATED PIPE-6 IN	2,052.000	LF		
0900	01012	NON-PERFORATED PIPE-8 IN	44.000	LF		
0910	01015	INSPECT & CERTIFY EDGE DRAIN SYSTEM	( 1.00)	LS		
0920	01021	PERF PIPE HEADWALL TY 1-6 IN	25.000	EACH		
0930	01022	PERF PIPE HEADWALL TY 1-8 IN	1.000	EACH		
0940	01025	PERF PIPE HEADWALL TY 2-6 IN	1.000	EACH		
0950	01029	PERF PIPE HEADWALL TY 3-6 IN	24.000	EACH		
0960	01033	PERF PIPE HEADWALL TY 4-6 IN	21.000	EACH		
0970	01456	CURB BOX INLET TYPE A	1.000	EACH		
0980	01490	DROP BOX INLET TYPE 1	1.000	EACH		
0990	01502	DROP BOX INLET TYPE 5A	1.000	EACH		
1000	01511	DROP BOX INLET TYPE 5D	1.000	EACH		
1010	01584	CAP DROP BOX INLET	2.000	EACH		
1020	01585	REMOVE DROP BOX INLET	1.000	EACH		
1030	01621	CONC MED BARR BOX INLET TY 9B1	2.000	EACH		

CONTRACT ID: 121002  
COUNTY: CAMPBELL  
PROPOSAL: IM NH 4714(034)

PAGE: 6  
LETTING: 02/24/12  
CALL NO: 100

LINE NO	ITEM	DESCRIPTION	APPROXIMATE UNIT QUANTITY	UNIT PRICE	AMOUNT
1040	01690	FLUME INLET TYPE 1	2.000 EACH		
1050	01691	FLUME INLET TYPE 2	12.000 EACH		
1060	01719	ADJUST INLET	1.000 EACH		
1070	01741	CORED HOLE DRAINAGE BOX CON-6 IN	93.000 EACH		
1080	01742	CORED HOLE DRAINAGE BOX CON-8 IN	4.000 EACH		
1090	01789	RECONSTRUCT MANHOLE	1.000 EACH		
1091	01810	STANDARD CURB AND GUTTER (ADDED: 2-21-12)	58.000 LF		
1100	01982	DELINEATOR FOR GUARDRAIL-WHITE	632.000 EACH		
1110	01983	DELINEATOR FOR GUARDRAIL-YELLOW	41.000 EACH		
1120	01984	DELINEATOR FOR BARRIER - WHITE	3,448.000 EACH		
1130	01985	DELINEATOR FOR BARRIER - YELLOW	4,218.000 EACH		
1140	02003	RELOCATE TEMP CONC BARRIER	93,240.000 LF		
1150	02014	BARRICADE-TYPE III	25.000 EACH		
1160	02237	DITCHING	20,000.000 LF		
1170	02265	REMOVE FENCE	166.000 LF		
1180	02274	FENCE-6 FT CHAIN LINK	166.000 LF		
1190	02363	GUARDRAIL CONNECTOR TO BRIDGE END TY A	13.000 EACH		
1200	02369	GUARDRAIL END TREATMENT TYPE 2A	30.000 EACH		
1210	02373	GUARDRAIL END TREATMENT TYPE 3	7.000 EACH		
1220	02381	REMOVE GUARDRAIL	34,551.300 LF		
1230	02387	GUARDRAIL CONNECTOR TO BRIDGE END TY A-1	13.000 EACH		

CONTRACT ID: 121002  
COUNTY: CAMPBELL  
PROPOSAL: IM NH 4714(034)

PAGE: 7  
LETTING: 02/24/12  
CALL NO: 100

LINE NO	ITEM	DESCRIPTION	APPROXIMATE QUANTITY	UNIT	UNIT PRICE	AMOUNT
1240	02391	GUARDRAIL END TREATMENT TYPE 4A	23.000	EACH		
1250	02397	TEMP GUARDRAIL	550.000	LF		
1260	02483	CHANNEL LINING CLASS II	1,041.000	TON		
1270	02484	CHANNEL LINING CLASS III	120.000	TON		
1280	02555	CONCRETE-CLASS B	183.000	CUYD		
1290	02562	SIGNS	4,400.000	SQFT		
1300	02600	FABRIC GEOTEXTILE TY IV FOR PIPE	306.000	SQYD	2.00	612.00
1310	02650	MAINTAIN & CONTROL TRAFFIC	( 1.00)	LS		
1320	02653	LANE CLOSURE	26.000	EACH		
1330	02671	PORTABLE CHANGEABLE MESSAGE SIGN	25.000	EACH		
1340	02690	SAFELOADING	4.000	CUYD		
1350	02720	SIDEWALK-4 IN CONCRETE	40.000	SQYD		
1360	02726	STAKING	( 1.00)	LS		
1370	02775	ARROW PANEL	26.000	EACH		
1380	02894	CRASH CUSHION TYPE VI-T	29.000	EACH		
1390	02898	RELOCATE CRASH CUSHION	28.000	EACH		
1400	03148	CONC MEDIAN BARRIER TYPE 9E	910.000	LF		
1410	03171	CONCRETE BARRIER WALL TYPE 9T	64,100.000	LF		
1420	05950	EROSION CONTROL BLANKET	127,552.000	SQYD		
1430	05966	TOPDRESSING FERTILIZER	8.000	TON		
1440	05985	SEEDING AND PROTECTION (REVISED: 2-13-12)	11,600.000	SQYD		

CONTRACT ID: 121002  
COUNTY: CAMPBELL  
PROPOSAL: IM NH 4714(034)

PAGE: 8  
LETTING: 02/24/12  
CALL NO: 100

LINE NO	ITEM	DESCRIPTION	APPROXIMATE QUANTITY	UNIT	UNIT PRICE	AMOUNT
1450	05989	SPECIAL SEEDING CROWN VETCH	14,340.000	SQYD		
1460	06417	FLEXIBLE DELINEATOR POST-W	480.000	EACH		
1470	06418	FLEXIBLE DELINEATOR POST-Y	238.000	EACH		
1480	06511	PAVE STRIPING-TEMP PAINT-6 IN	380,000.000	LF		
1490	06513	PAVE STRIPING-TEMP PAINT-12 IN	16,400.000	LF		
1500	06549	PAVE STRIPING-TEMP REM TAPE-B	25,000.000	LF		
1510	06550	PAVE STRIPING-TEMP REM TAPE-W	25,000.000	LF		
1520	06551	PAVE STRIPING-TEMP REM TAPE-Y	25,000.000	LF		
1530	06568	PAVE MARKING-THERMO STOP BAR-24IN	191.000	LF		
1540	06573	PAVE MARKING-THERMO STR ARROW	2.000	EACH		
1550	06574	PAVE MARKING-THERMO CURV ARROW	20.000	EACH		
1560	06576	PAVE MARKING-THERMO ONLY	7.000	EACH		
1570	06585	PAVEMENT MARKER TY IVA-MW TEMP	4,352.000	EACH		
1580	06586	PAVEMENT MARKER TY IVA-MY TEMP	8,632.000	EACH		
1590	06592	PAVEMENT MARKER TYPE V-B W/R	1,879.000	EACH		
1600	06593	PAVEMENT MARKER TYPE V-B Y/R	651.000	EACH		
1610	08001	STRUCTURE EXCAVATION-COMMON	318.000	CUYD		
1620	08100	CONCRETE-CLASS A	4.660	CUYD		
1630	08150	STEEL REINFORCEMENT	178.000	LB		
1640	08904	CRASH CUSHION TY VI CLASS C TL3	1.000	EACH		
1650	10212ND	TIME COMPONENT NORTHBOUND; (REVISED: 2-13-12)	25,000.000	DOLL		

CONTRACT ID: 121002  
COUNTY: CAMPBELL  
PROPOSAL: IM NH 4714(034)

PAGE: 9  
LETTING: 02/24/12  
CALL NO: 100

LINE NO	ITEM	DESCRIPTION	APPROXIMATE QUANTITY	UNIT	UNIT PRICE	AMOUNT
1660	10222ND	TIME COMPONENT SOUTHBOUND;(REVISED: 2-13-12)	50,000.000	DOLL		
1670	20410ED	MAINTAIN LIGHTING	( 1.00)	LS		
1680	21802EN	G/R STEEL W BEAM-S FACE (7 FT POST)	33,687.500	LF		
1690	21935EN	REMOVE CONC MEDIAN BARRIER	2,516.000	LF		
1700	23131ER701	PIPELINE VIDEO INSPECTION	65.000	LF		
1710	23143ED	KPDES PERMIT AND TEMP EROSION CONTROL	( 1.00)	LS		
1720	23158ES505	DETECTABLE WARNINGS	115.000	SQFT		
1730	23237EN10W	WATERBLAST STRIPE REMOVAL	385,000.000	LF		
1740	23864EC	CHANNEL LINING CLASS III-MOD	365.000	TON		
1750	24189ER	DURABLE WATERBORNE MARKING-6 IN W	132,027.000	LF		
1760	24190ER	DURABLE WATERBORNE MARKING-6 IN Y	86,110.000	LF		
1770	24191ER	DURABLE WATERBORNE MARKING-12 IN W	23,795.000	LF		
1780	24458EC	UTILITY LINE HANGER FOR BRIDGES	2.000	EACH		
SECTION 0005 BRIDGE						
1790	02231	STRUCTURE GRANULAR BACKFILL	105.000	CUYD		
1800	02403	REMOVE CONCRETE MASONRY	40.800	CUYD		
1810	02555	CONCRETE-CLASS B	5.400	CUYD		
1820	02599	FABRIC-GEOTEXTILE TYPE IV	105.000	SQYD		
1830	02998	MASONRY COATING	500.000	SQYD		
1840	03294	EXPAN JOINT REPLACE 1 1/2 IN	432.000	LF		
1850	03295	EXPAN JOINT REPLACE 2 IN	124.000	LF		

CONTRACT ID: 121002  
COUNTY: CAMPBELL  
PROPOSAL: IM NH 4714(034)

PAGE: 10  
LETTING: 02/24/12  
CALL NO: 100

LINE NO	ITEM	DESCRIPTION	APPROXIMATE QUANTITY	UNIT	UNIT PRICE	AMOUNT
1860	03298	EXPAN JOINT REPLACE 4 IN	475.000	LF		
1870	03299	ARMORED EDGE FOR CONCRETE	37.000	LF		
1880	03300	ELIMINATE TRANSVERSE JOINT	415.000	LF		
1890	08001	STRUCTURE EXCAVATION-COMMON	230.000	CUYD		
1900	08016	REINF CONC SLOPE WALL-6 IN	283.000	SQYD		
1910	08020	CRUSHED AGGREGATE SLOPE PROT	135.000	TON		
1920	08033	TEST PILES	140.000	LF		
1930	08046	PILES-STEEL HP12X53	1,140.000	LF		
1940	08094	PILE POINTS-12 IN	44.000	EACH		
1950	08100	CONCRETE-CLASS A	144.200	CUYD		
1960	08104	CONCRETE-CLASS AA	125.800	CUYD		
1970	08150	STEEL REINFORCEMENT	18,074.000	LB		
1980	08151	STEEL REINFORCEMENT-EPOXY COATED	37,534.000	LB		
1990	08504	EPOXY SAND SLURRY	5,530.000	SQYD		
2000	08526	CONC CLASS M FULL DEPTH PATCH	156.000	CUYD		
2010	08534	CONCRETE OVERLAY-LATEX	1,695.000	CUYD		
2020	08549	BLAST CLEANING	37,482.000	SQYD		
2030	08550	HYDRODEMOLITION	32,515.000	SQYD		
2040	08551	MACHINE PREP OF SLAB	345.000	SQYD		
2050	08671	PRECAST PC BOX BEAM SB33	315.800	LF		
2060	21532ED	RAIL SYSTEM TYPE III	160.500	LF		

CONTRACT ID: 121002  
COUNTY: CAMPBELL  
PROPOSAL: IM NH 4714(034)

PAGE: 11  
LETTING: 02/24/12  
CALL NO: 100

LINE NO	ITEM	DESCRIPTION	APPROXIMATE QUANTITY	UNIT	UNIT PRICE	AMOUNT
2070	23386EC	JOINT SEAL REPLACEMENT	1,031.000	LF		
2080	23622EC	CLEAN DEBRIS FROM LOWER CHORD B00039L	( 1.00)	LS		
2090	23622EC	CLEAN DEBRIS FROM LOWER CHORD B00039R	( 1.00)	LS		
2100	24094EC	PARTIAL DEPTH PATCHING	336.200	CUYD		
2110	24424EC	REM AND REPLACE BRIDGE CHAIN LINK FENCE	604.000	LF		
2120	24438EC	SEAL CRACKS BRIDGE DECK B00056L	( 1.00)	LS		
2130	24438EC	SEAL CRACKS BRIDGE DECK B00056R	( 1.00)	LS		
2140	24439EC	SEAL BRIDGE DECK B00056L	( 1.00)	LS		
2150	24439EC	SEAL BRIDGE DECK B00056R	( 1.00)	LS		
2160	24456EC	EXPAN JOINT REPLACE 5 1/2 IN 5 1/2	102.000	LF		
SECTION 0006 SIGNING						
2170	04904	BARRIER MOUNTING BRACKET	2.000	EACH		
2180	06405	SBM ALUMINUM PANEL SIGNS	3,771.500	SQFT		
2190	06406	SBM ALUM SHEET SIGNS .080 IN	9.000	SQFT		
2200	06407	SBM ALUM SHEET SIGNS .125 IN	64.000	SQFT		
2210	06411	STEEL POST TYPE 2	90.000	LF		
2220	06441	GMSS GALV STEEL TYPE C	577.000	LB		
2230	06449	REM OVERHEAD SIGN SUPPORT STR	1.000	EACH		
2240	06450	REM OVERHEAD STRUC CONC BASE	1.000	EACH		
2250	06490	CLASS A CONCRETE FOR SIGNS	1.300	CUYD		
2260	06491	STEEL REINFORCEMENT FOR SIGNS	88.000	LB		



CONTRACT ID: 121002  
COUNTY: CAMPBELL  
PROPOSAL: IM NH 4714(034)

PAGE: 12  
LETTING: 02/24/12  
CALL NO: 100

LINE NO	ITEM	DESCRIPTION	APPROXIMATE QUANTITY	UNIT	UNIT PRICE	AMOUNT
2270	20418ED	REMOVE & RELOCATE SIGNS	1.000	EACH		
2280	20419ND	ROADWAY CROSS SECTION	1.000	EACH		
2290	20912ND	BARRIER WALL POST	2.000	EACH		
2300	21373ND	REMOVE SIGN PANEL	16.000	EACH		
SECTION 0007		SIGNALIZATION				
2310	04811	JUNCTION BOX TYPE B	7.000	EACH		
2320	04830	LOOP WIRE	3,575.000	LF		
2330	04850	CABLE-NO. 14/1 PAIR	2,100.000	LF		
2340	04895	LOOP SAW SLOT AND FILL	1,375.000	LF		
SECTION 0008		LIGHTING				
2350	04700	POLE 30 FT MTG HT	39.000	EACH		
2360	04701	POLE 40 FT MTG HT	98.000	EACH		
2370	04714	POLE 120 FT MTG HT HIGH MAST	18.000	EACH		
2380	04720	BRACKET 4 FT	18.000	EACH		
2390	04722	BRACKET 8 FT	18.000	EACH		
2400	04723	BRACKET 10 FT	30.000	EACH		
2410	04724	BRACKET 12 FT	47.000	EACH		
2420	04725	BRACKET 15 FT	14.000	EACH		
2430	04730	BRACKET C	12.000	EACH		
2440	04740	POLE BASE	98.000	EACH		
2450	04750	TRANSFORMER BASE	125.000	EACH		

CONTRACT ID: 121002  
COUNTY: CAMPBELL  
PROPOSAL: IM NH 4714(034)

PAGE: 13  
LETTING: 02/24/12  
CALL NO: 100

LINE NO	ITEM	DESCRIPTION	APPROXIMATE QUANTITY	UNIT	UNIT PRICE	AMOUNT
2460	04760	POLE W/SECONDARY CONTROL EQUIP	1.000	EACH		
2470	04761	LIGHTING CONTROL EQUIPMENT	4.000	EACH		
2480	04770	HPS LUMINAIRE	127.000	EACH		
2490	04771	HPS LUMINAIRE WALL PACK	3.000	EACH		
2500	04773	HPS LUMINAIRE HIGH MAST	107.000	EACH		
2510	04780	FUSED CONNECTOR KIT	284.000	EACH		
2520	04793	CONDUIT-1 1/4 IN	15,895.000	LF		
2530	04795	CONDUIT-2 IN	4,420.000	LF		
2540	04797	CONDUIT-3 IN	3,384.000	LF		
2550	04800	MARKER	58.000	EACH		
2560	04820	TRENCHING AND BACKFILLING	38,420.000	LF		
2570	04832	WIRE-NO. 12	21,399.000	LF		
2580	04833	WIRE-NO. 8	57,597.000	LF		
2590	04834	WIRE-NO. 6	20,910.000	LF		
2600	04835	WIRE-NO. 4	6,300.000	LF		
2610	04860	CABLE-NO. 8/3C DUCTED	2,120.000	LF		
2620	04861	CABLE-NO. 6/3C DUCTED	3,570.000	LF		
2630	04862	CABLE-NO. 4/3C DUCTED	17,466.000	LF		
2640	04863	CABLE-NO. 2/3C DUCTED	15,137.000	LF		
2650	04940	REMOVE LIGHTING	( 1.00)	LS		
2660	20391NS835	JUNCTION BOX TYPE A	44.000	EACH		

CONTRACT ID: 121002  
COUNTY: CAMPBELL  
PROPOSAL: IM NH 4714(034)

PAGE: 14  
LETTING: 02/24/12  
CALL NO: 100

LINE NO	ITEM	DESCRIPTION	APPROXIMATE QUANTITY	UNIT	UNIT PRICE	AMOUNT
2670	20392NS835	JUNCTION BOX TYPE C	9.000	EACH		
2680	20993ND	HPS LUMINAIRE 400 WATT	12.000	EACH		
2690	21543EN	BORE AND JACK CONDUIT	4,104.000	LF		
2700	21563NN	SPLICE BOX 8 X 6 X 4 IN	10.000	EACH		
2710	22928EN	CABLE-NO. 1/3C DUCTED	3,612.000	LF		
2720	23161EN	POLE BASE-HIGH MAST	164.830	CUYD		
SECTION 0009 TRAFFIC LOOPS						
2730	04793	CONDUIT-1 1/4 IN	60.000	LF		
2740	04795	CONDUIT-2 IN	540.000	LF		
2750	04820	TRENCHING AND BACKFILLING	580.000	LF		
2760	04829	PIEZOELECTRIC SENSOR	50.000	EACH		
2770	04830	LOOP WIRE	25,310.000	LF		
2780	04895	LOOP SAW SLOT AND FILL	4,370.000	LF		
2790	20359NN	GALVANIZED STEEL CABINET	3.000	EACH		
2800	20360ES818	WOOD POST	6.000	EACH		
2810	20391NS835	JUNCTION BOX TYPE A	8.000	EACH		
2820	20392NS835	JUNCTION BOX TYPE C	2.000	EACH		
2830	21543EN	BORE AND JACK CONDUIT	120.000	LF		
SECTION 0010 DEMOB AND MOB						
2840	02568	MOBILIZATION (NO MORE THAN 5%)		LUMP		
2850	02569	DEMobilIZATION (AT LEAST 1.5%)		LUMP		
TOTAL BID						